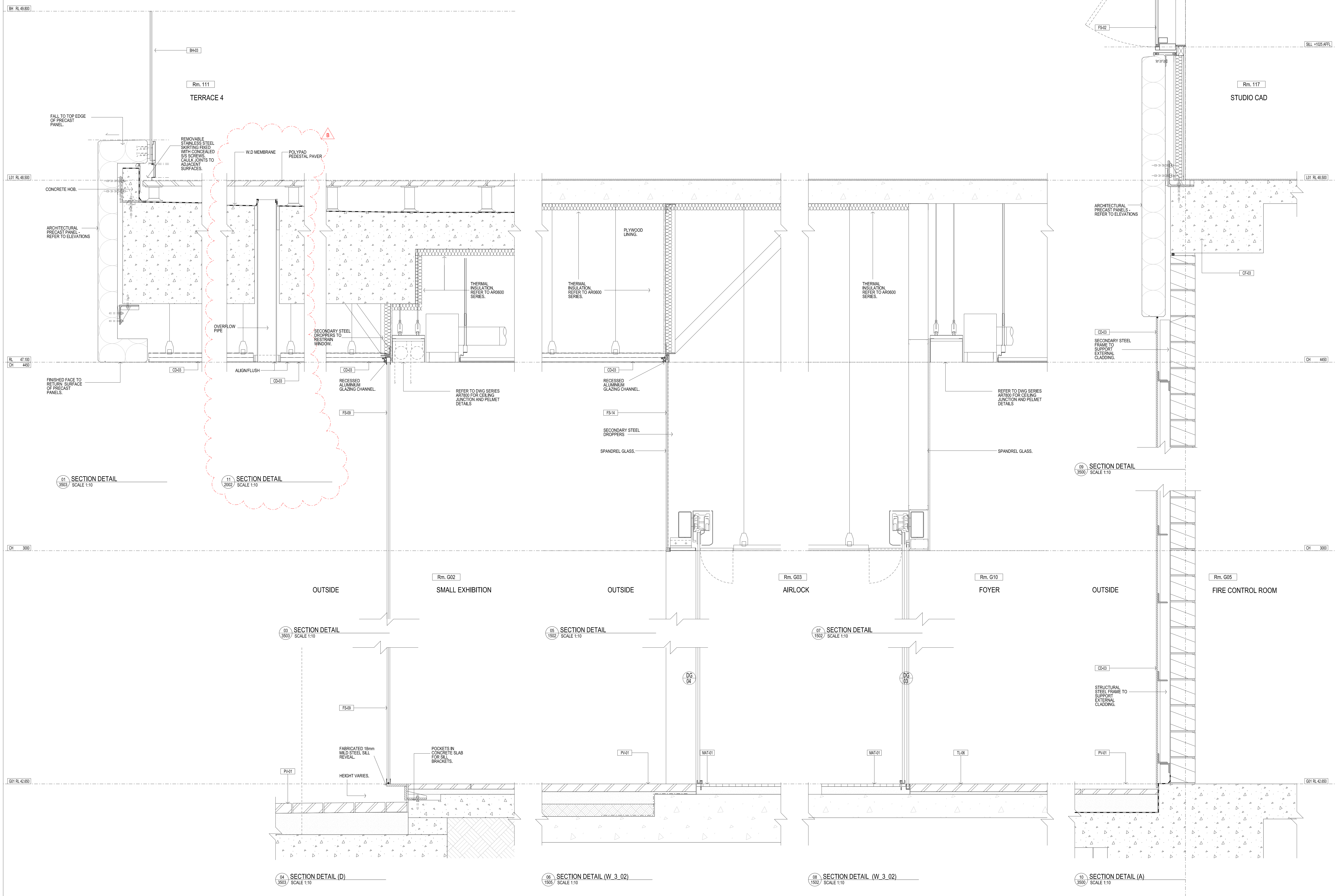


CONTRACTORS SHALL VERIFY ALL DIMENSIONS BEFORE ANY WORK COMMENCES. ALL SHOP DRAWINGS SHALL BE SUBMITTED TO THE SUPERINTENDENT AND MANUFACTURER. SHALL NOT COMMENCE FROM THE RETURN OF DIMENSIONS SHOP DRAWINGS ISSUED BY THE CONSULTANT. DIMENSIONS SHALL TAKE PRECEDENCE OVER SCALES. THIS DRAWING SHALL BE USED IN CONJUNCTION WITH ALL RELEVANT CONTRACT SPECIFICATIONS AND DRAWINGS COPYRIGHT OF THIS DRAWING IS VESTED IN NADAAA

General Notes

REFER ARCHITECTURAL DRAWINGS:

- FACADE SETOUT AR1502-AR1507
- PRECAST SETOUT AR1512-AR1517
- SCREEN SETOUT AR1502-AR1557
- SCREEN DETAILS AR6500-AR6554



Rev	Issue	Revision Description	And	Date
B	SG	O/FLOW DETAIL ADDED		10.10.13
A	SG	ISSUE FOR CONSTRUCTION		20.09.13
11	SG	TENDER ISSUE		16.04.13
10	SG	VALUE MANAGEMENT ISSUE		28.03.13
09	SG	PRECAST REVIEW		21.03.13
08	SG	100% CD - TENDER ISSUE		07.09.12
07	SG	90% CD ISSUE		10.09.12
06	SG	75% CD ISSUE		13.07.12
05	SG	50% CD ISSUE		08.06.12
04	JC	FINAL DD ISSUE		24.02.12
03	JC	DESIGN DEVELOPMENT ISSUE		20.01.12
02	JC	DESIGN DEVELOPMENT ISSUE		22.12.11
01	JC	PRELIMINARY DD		28.10.11



NADAAA
 NADAAA
 1920 Washington Street No.2
 Boston Massachusetts 02118 USA
 Telephone +1 617 442 8232
 Facsimile +1 688 442 1417
 Email nad@nadaaa.com

John Wardle Architects
 25 Rokeby Street, Collingwood, Victoria 3066 Australia
 Tel: +61 3 8662 0400 www.johnwardlearchitects.com
 © 2012 John Wardle Architects ABN 83 006 814 268

Client **University of Melbourne Parkville Campus**

Project **Faculty of Architecture Building and Planning**

Title **SECTION DETAILS SHEET 2**

Project No.	0913	Scale	1:10 @ A0 1:20 @ A2
Drawing No.	AR6101	Revision	B

Date: Dec 2011 Dwn - Co-Ord - Chk -

FILENAME - \$FILES

FOR CONSTRUCTION